



Golden Lane Housing

working in partnership with 

2014 Retail Charity Bond One year on



CEO overview

In July 2014 with Allia’s assistance, Golden Lane Housing (GLH) launched a new Retail Charity Bond to raise £11 million to house over 100 new tenants – the first to be listed in the UK.

Two of our tenants with a learning disability opened trading on the floor of the London Stock Exchange the day that our bond was admitted – an amazing opportunity for them and a first for a learning disability charity that has helped open up social investment to a whole new range of mainstream investment institutions and brokers.

One year on...

Since the launch we now have 24 houses and bungalows purchased or in conveyancing, amounting to around £9 million of expenditure. We have a strong pipeline of properties on which the remaining amount will be spent by the end of the summer.

So far, nearly 90 people have either moved or are planning to move into much needed housing that has been specially adapted to meet their current and future care and support needs. A new home means so much to them and their loved ones.

Vicky’s story over the page demonstrates the impact and life changing experience that investment in new housing can make to the life and family of people with a learning disability.

During 2014/15 GLH secured considerable national and international media coverage. We have undertaken presentations to over 600 people at conferences during the last 12 months, in this country and abroad, and also received significant media coverage about our pioneering work with the support of Allia to raise funds for housing for people with a learning disability. A screen shot showing our media coverage is on the back page.

By the end of summer we will have provided housing for 120 people in 30 properties across the country.

This is creating a lasting legacy for people with a learning disability.



“Where I was living it was damp, I didn’t like it. My new house is gorgeous. I live with my friends and the staff are fun. We’re always going out too.”

GLH tenant

We have had discussions with a range of charities who are now looking at ways of raising capital for many important purposes, and GLH’s experience and expertise is being widely shared to this end.

Housing for people with a learning disability is grossly underprovided, and the demand for new homes is growing. In addition, a large proportion of people are currently living with elderly parents, or in substandard accommodation. Whilst the abuse scandals in recent years have given the issue prominence, research suggests there are over 3,000 people still inappropriately housed in Assessment and Treatment Units.

On behalf of our new tenants, their families, and GLH I would like to thank our 2014 Retail Charity Bond investors.

Alastair Graham
Director, Golden Lane Housing



“If Vicky always lived with us she would have a tiny life, and it would get harder as we got older. We wanted what was best for her, and to have more opportunities.”

Steven and June Ellis,
Vicky’s parents

Vicky’s story

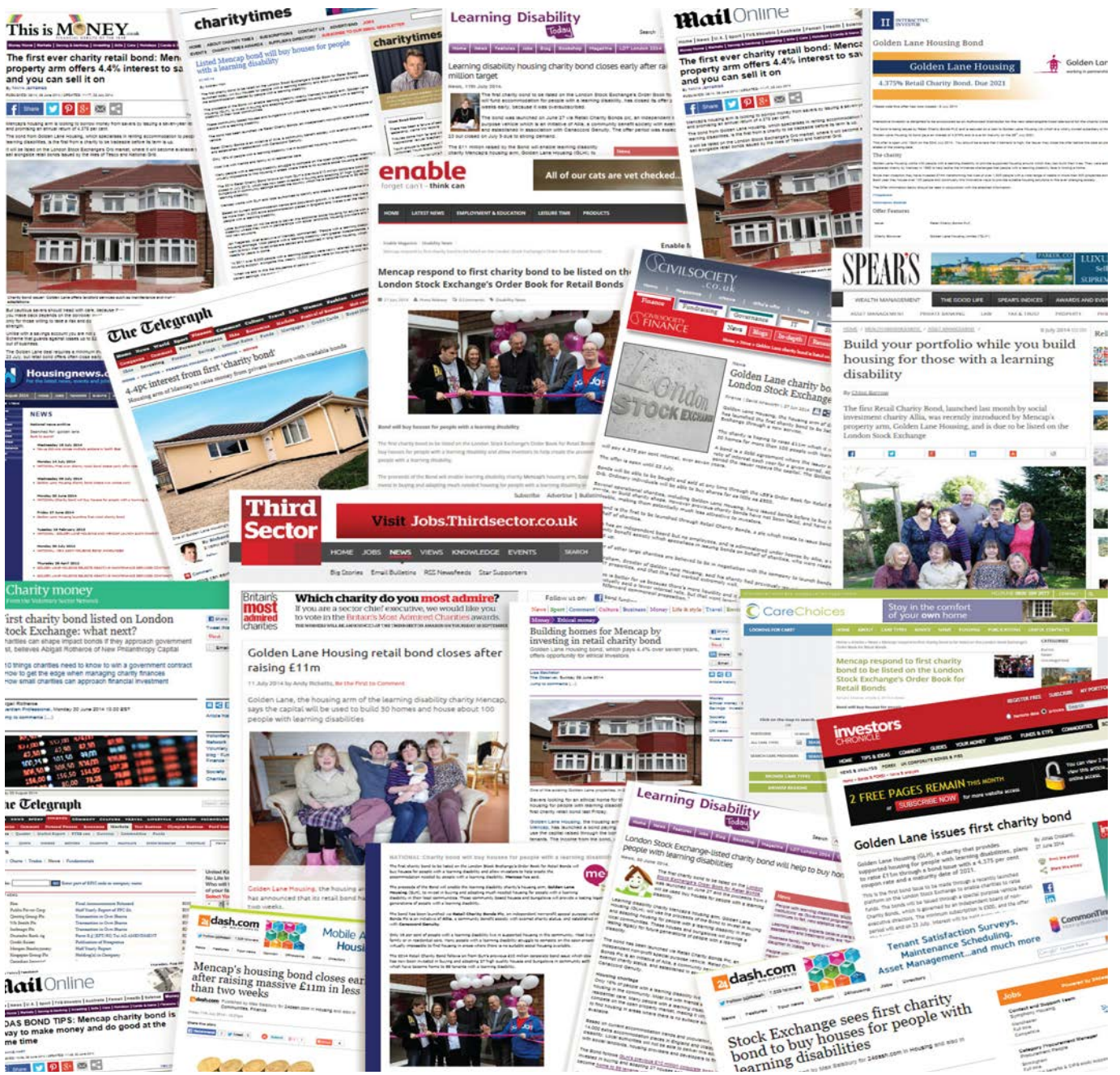
Friends Vicky, David, John and Susan were living in properties based in a courtyard setting in Grimsby supported by Mencap when their needs changed.

Steven and June Ellis, Vicky’s parents explain, “The beauty of GLH is they took on all our concerns about Vicky and her bedroom. They agreed to convert the garage into her front bedroom. The day they told us we were beaming. She loves her room! There are two lovely big windows so she can people watch, she finds it relaxing and it’s the first thing she does when she gets home.

We were worried it would take a long time to get use to their new home; we were amazed it only took two weeks. Vicky is happy, settled, and safe and has got a secured future. Mencap have been brilliant and there is extra staff on now. We’re really happy with the staff, they go over and above. They are wonderful and use sign language with Vicky, and two of the new staff have had more training so they are able to use far more signs with her which we feel makes a big difference. We couldn’t ask for more, everyone is so committed and always there for them. It’s a beautiful bungalow and a lovely home to come into; it has a nice feel about it. We hope this move to the bungalow will I hope be her forever home.”

You can read more about Vicky’s story at www.glh.org.uk/vicky

2014 Retail Charity Bond press coverage



Get in touch

Golden Lane Housing
 West Point
 501 Chester Road
 Manchester
 M16 9HU

T: 0300 003 7007
 E: enquiries@glh.org.uk
 W: www.glh.org.uk
 Twitter: @GoldenLaneHouse